

Orona 3G

Domo PLUS

Ceilings and lighting LED - Automatic lighting switch-off included

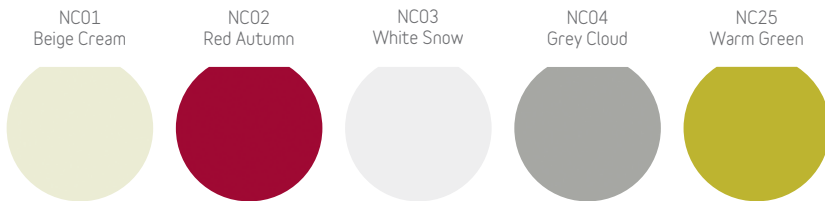
MODEL*



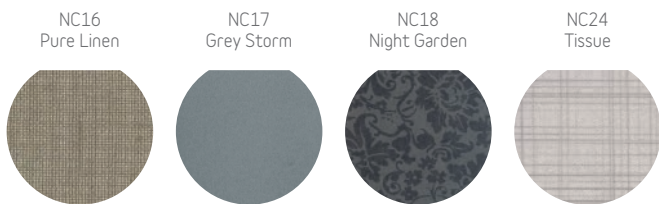
* Available Lighting models dependant on car dimensions - please enquire.

Car walls

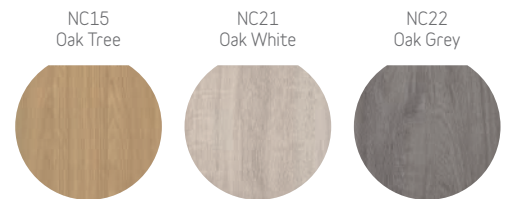
NECOMPACT COLOUR



NECOMPACT TEXTURE



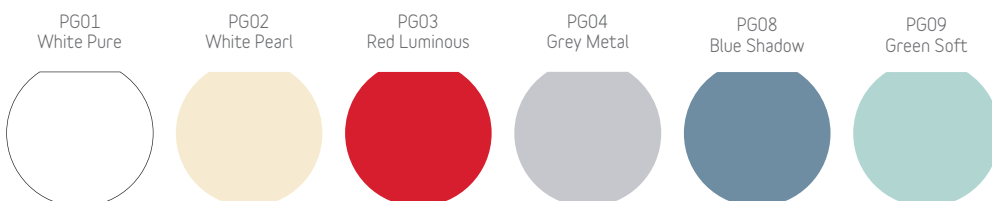
NECOMPACT WOOD



PANEL STAINLESS



GLASS AMBIENCE



OTHERS

- Without cladding (for local fit out)
- Tip-up seat
- 2 Entrances or 'Through car' for 180, 'Front/Adjacent' for 90 & 270

Car operating panel



OTHERS

- Double car operating panel
- Horizontal car operating panel

Car indicator



7 Segment



Dot-matrix



TFT

OTHERS

- Car direction arrows
- Overload indicator (buzzer & light)
- Voice synthesizer
- Direction arrows on entrance return
- Car gong
- Inductive acoustic coupler

Landing indicator



7 Segmentos



Matriz puntos



TFT



Wall landing indicator

OTHERS

- Next departure indicator
- Landing gong

Car push buttons



Orona Braille circular model



Model with additional contrast

OTHERS

- Door close push button
- Key switch push button (Standard or eurocylinder)
- External call cancelling
- Coded call

Orona 3G Series push buttons are water-resistant (IPX3 under EN 60529) and have fully passed the impact and fire tests defined in the EN 81-71 standard.

For enhanced anti-vandalism resistance needs (Category 1), Orona offers its comprehensive PPSS 03G anti-vandalism solutions, which comply with the EN 81-71 standard in its entirety (push buttons, displays, doors, lighting, ceilings, walls, floors, mirrors, enclosures, etc.).

Landing push buttons



Push buttons to suit the lifts control type (1 or 2 push buttons)



Key switch push button (standard or eurocylinder)



Surface mounted push buttons

Mirrors

- MH (Mirror 1/2)
- MT (Mirror 3/4 narrow)
- Rear-view mirror (EN 81-70)

FINISH

- 01 Clear
- 02 Smoked

Bumprails

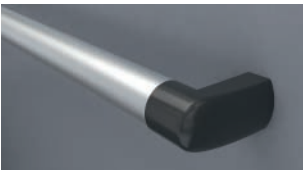
- Wood
- Stainless steel
- PVC
- Double bumprail

Skirtings

- SK01 Anodized Aluminium (St St finish)
- SK02 Lacquered Aluminium

Handrails

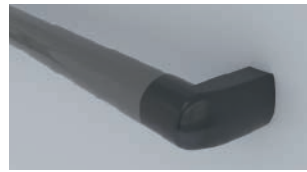
HR01 (Aluminium tube)



HR02 (Aluminium tube)



HR03 (Aluminium tube)



HR04 (Stainless steel tube)



Car operating panel material and/or ceiling and/or doors (car and landing)

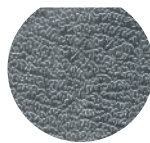
ST01
St St Base



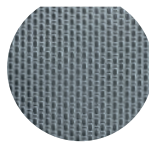
ST02
St St Plus



ST03
St St Elephant Skin Pattern



ST04
St St Linen Pattern



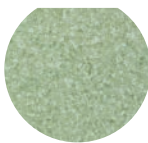
Floors

SC-PVC HIGH

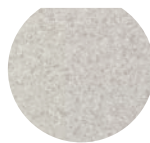
SC01
Red Cherry



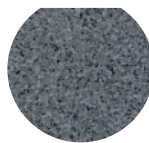
SC02
Green Leaf



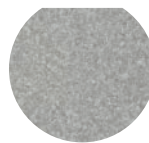
SC03
Grey Ice



SC04
Grey Storm



SC05
Grey Silver



SC06
Beige Sand



SC07
Black Circles

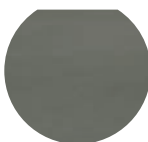


SW CERAMICS · Available subject to dimensions

SW01
Black Basalt



SW02
Grey Cement



SW03
Grey Pearl



SW04
Beige Basalt



SW06
Brown Earth



OTHERS

- Prepared for granite (23 mm)
- Prepared for PVC (23 mm or 3 mm in restricted pits)